

Stai cercando un College a Londra??

La tua ricerca appena terminata!

Futuro Digitale, in partenariato con uno dei più rinomati College di Londra, ti offre una grande varietà di corsi: General English, Spoken English, Cambridge ESOL, IELTS & PTE Exam Preparation courses. Ognuno di questi prevede lezioni sia di gruppo che individuali.

I metodi di insegnamento, moderni ed efficaci, renderanno le lezioni piacevoli e dinamiche permettendoti di acquisire confidenza con la lingua.

Tutti i professori sono altamente qualificati e con anni di esperienza nell'insegnamento. Il College è accreditato dal British Council e approvato dall'UKBA.

Il campus è situato nel centro di **Londra**, a **Oxford Street**, a un minuto dalla stazione della metro Tottenham **Court Road**.

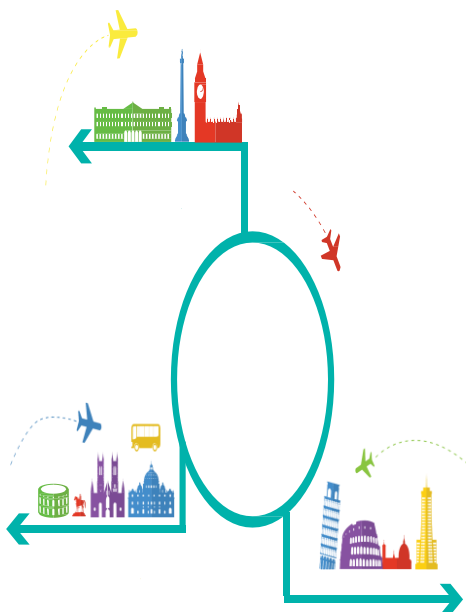
Le ampie e luminose classi sono fornite di moderne attrezzature utili ad un rapido apprendimento e allo svolgimento della lezione.

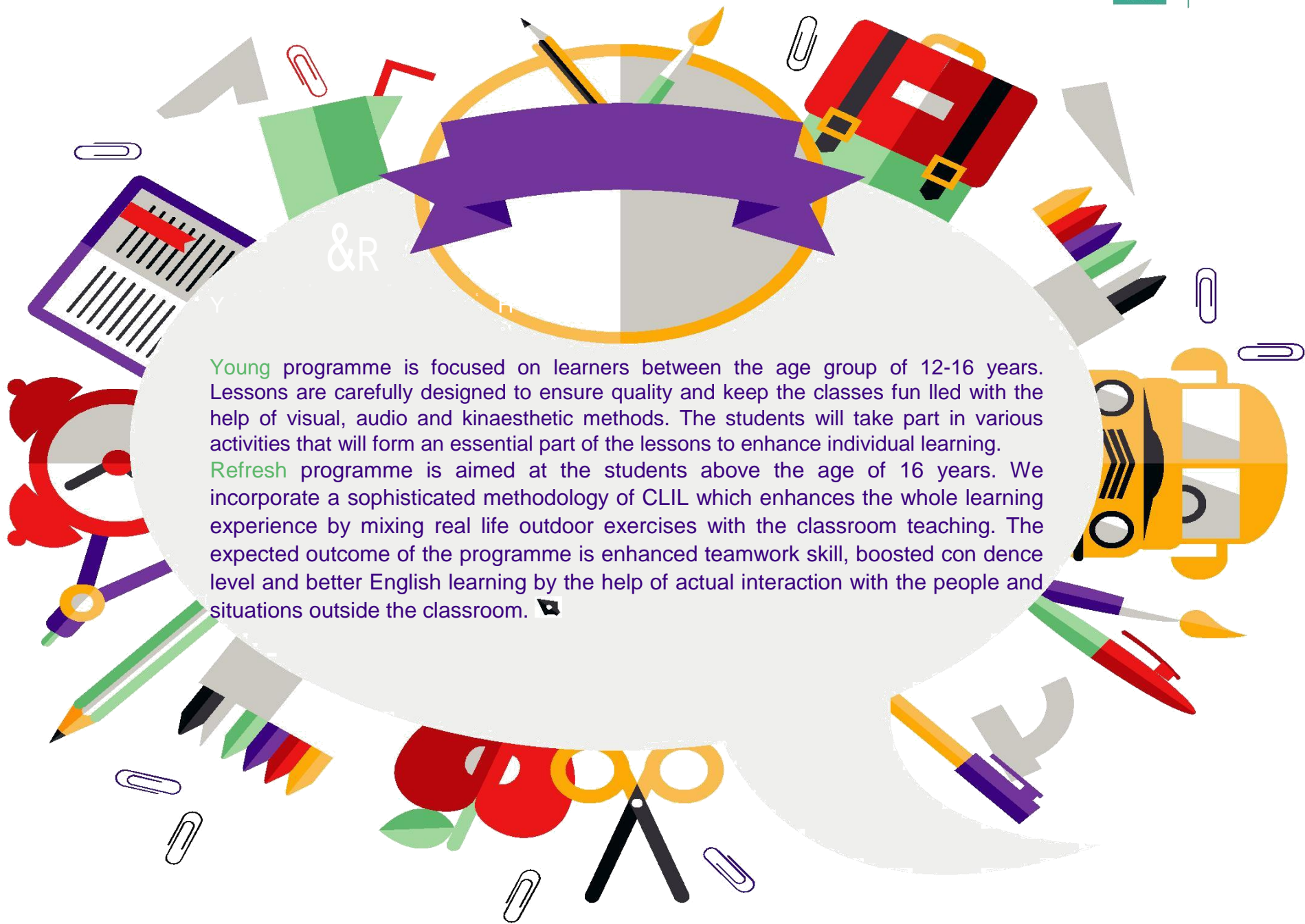
Futuro Digitale conosce le difficoltà che lo studente può avere all'arrivo a Londra e siamo lieti di venirci incontro offrendogli tutta la nostra cura ed assistenza.

A questo proposito il nostro staff fornisce supporto individuale durante tutto il tuo soggiorno nella scuola che, tra le altre cose, comprende un programma di introduzione volto alla conoscenza della città con gite ed escursioni a Londra e non solo.

Immergiti nella cultura inglese con una vacanza studio a Londra!

- [Pacchetti & Prezzi offerti da Futuro Digitale](#)
- Compila il [Participant Registration Form](#) e invialo a info@futurodigitale.org





Young programme is focused on learners between the age group of 12-16 years. Lessons are carefully designed to ensure quality and keep the classes fun lled with the help of visual, audio and kinaesthetic methods. The students will take part in various activities that will form an essential part of the lessons to enhance individual learning.

Refresh programme is aimed at the students above the age of 16 years. We incorporate a sophisticated methodology of CLIL which enhances the whole learning experience by mixing real life outdoor exercises with the classroom teaching. The expected outcome of the programme is enhanced teamwork skill, boosted con dence level and better English learning by the help of actual interaction with the people and situations outside the classroom. 🚩

At **FUTURO DIGITALE** we believe that quality teaching and having fun while learning should happen at the same time.

We believe in interactive classes and learning through communication.

We apply the communicative method to teaching English because it works best. But we also believe in pushing our students and demanding more of them, so they achieve more than they believed possible and we believe in having fun because we love what we do.

UNIQUE TAILORED APPROACH TO LEARNING

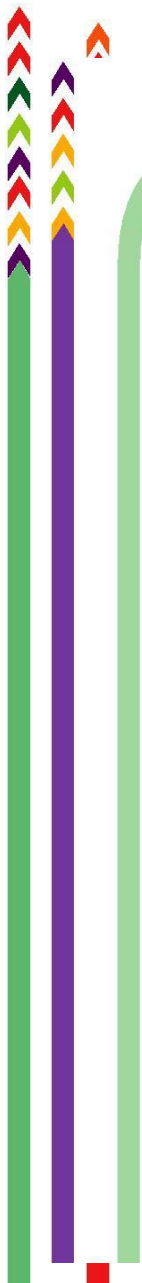
We customise our teaching technique based on individual student's learning needs and hence you get exactly what you need to in order to achieve your goals. We have made it a compulsory part of our curriculum for all our students to talk and converse daily in English to gain confidence and learn quickly.



CENTRAL LONDON LOCATION

UKCE is located in the heart of London. Situated on one of the world's most popular destinations, Oxford Street, we are just away from popular attractions such as Trafalgar Square, The London Eye, The River Thames, Westminster and many more. We are situated in the centre of the city and are very well connected by all the transport links and have various cafes, parks, shops and night clubs just a few minutes away. Students under 16 will be taught on a different campus.

WHO WE ARE



THE METHOD → CLIL (Content and Language Integrated Learning)

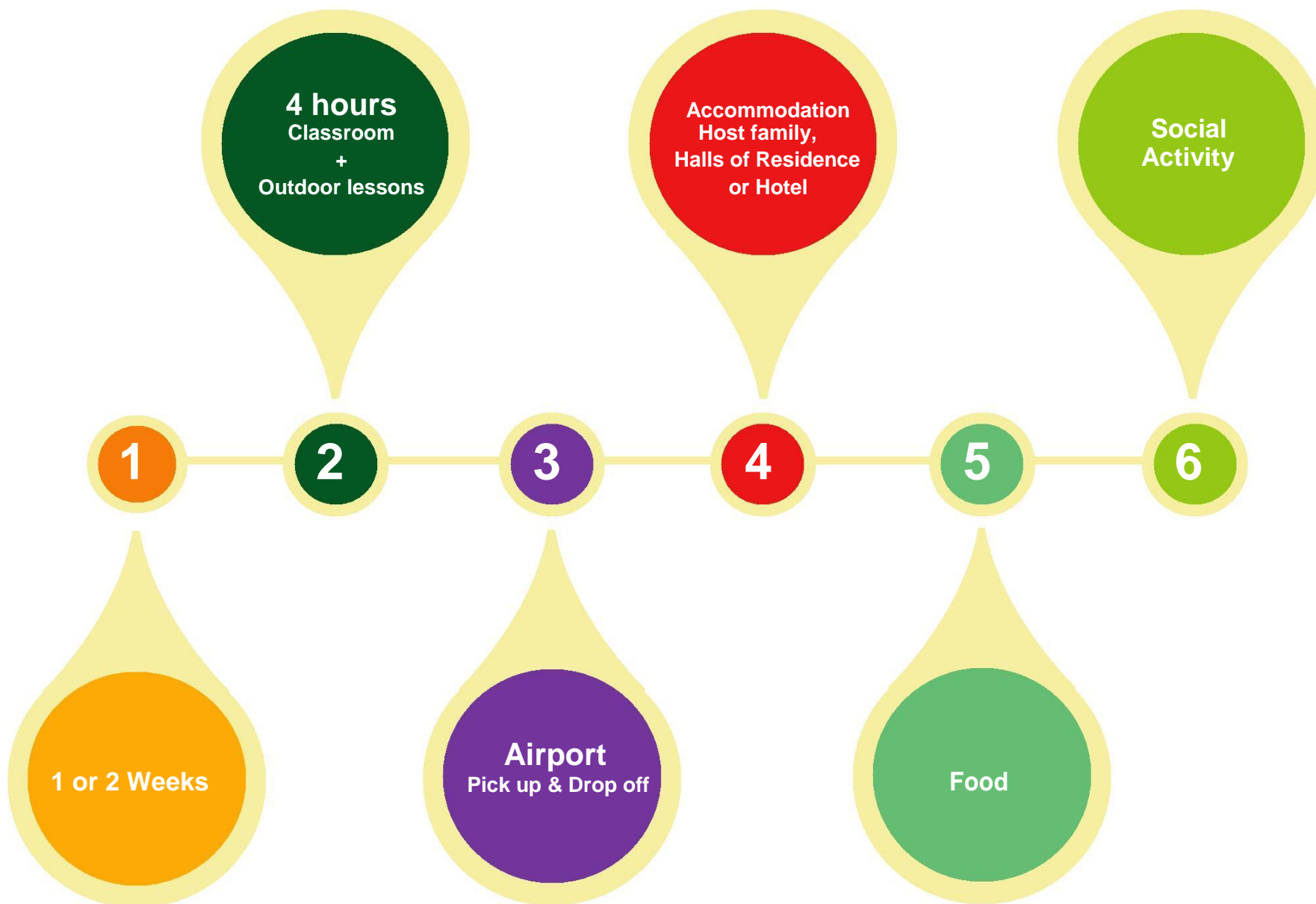
CLIL aims to introduce students to new ideas and concepts in traditional curriculum subjects, using the foreign language as the medium of communication - in other words, to enhance the pupils' learning experience by exploiting the synergies between the two subjects.

This approach involves learning subjects such as history or geography through English language. It can be very successful in enhancing the learning of English and other subjects, and developing in the youngsters a positive 'can do' attitude towards themselves as language learners.

HOW

CLIL is fundamentally based on methodological principles established by research on "language immersion". For 1 or 2 weeks the students will have two hours of classes in the English classroom, where the focus is on improving grammar, vocabulary and reading and 2 hours of lessons in different places to put into practice what they have learnt. How? They visit important tourist attractions of interest in London (for example the British Museum and Buckingham Palace), fashion shops, markets...to recreate situations where they can practise their language acquisition.

► Programmes' pathway WHAT TO EXPECT?



ACCOMMODATION

HOST FAMILY

One way to improve your English is to live with a British family and live the British lifestyle. We offer a unique host family experience where you will be able to learn, enjoy and experience the real United Kingdom.

All of the families are checked and approved by the agencies that we use for accommodation needs and many are DBS checked as well.

STUDENT HALLS OF RESIDENCE

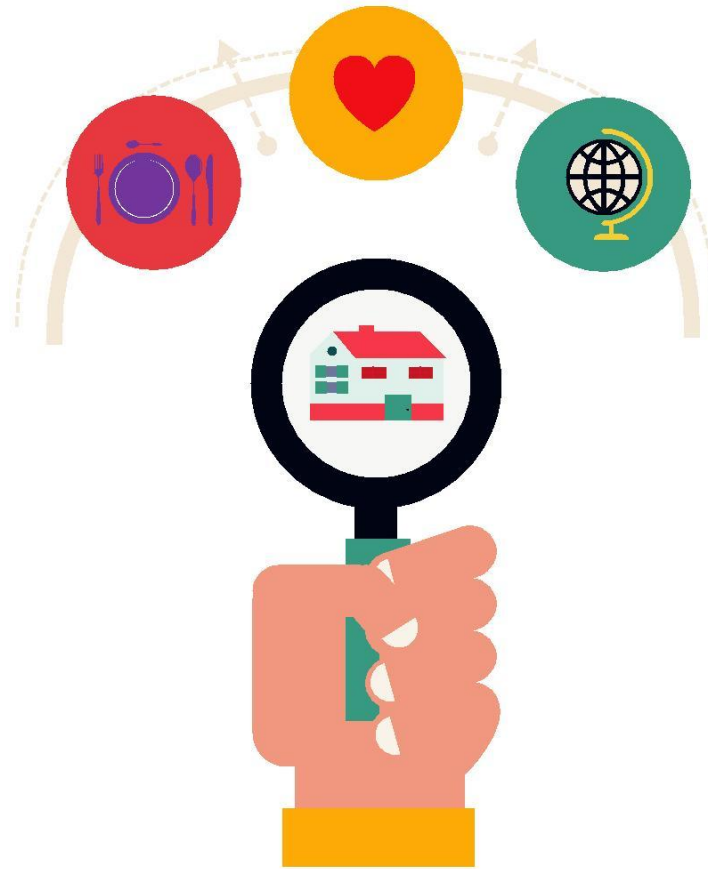
Student halls of residence are an exciting way of experiencing London. They are located near the campus and are also an excellent way of meeting young like minded people from different cultures. These are generally very close to central London and the college and are available to students who are of 16 years or above only.

HOTEL

All the hotels that we use are at least 3 stars or above. These are located in and around London and come with comfortable rooms with private showers for each room, personal TV, internet and breakfast facilities.

Hotels are a great way to stay together within the London zones of 2-3.

Hotel accommodation has its benefits as they provide many extras for example gym facilities, lounge facilities and also the possibility of hosting younger students from 12 years onwards.



HOME AWAY FROM HOME

It's our aim to help you find the perfect place to stay in order to help you achieve the standards you deserve in your language studies.

We work only with British Council accredited accommodation providers that ensure students' safety and security.

We have various options available that cater to all student demands. We offer host family, halls of residence and hotel accommodation.

All these accommodation options come with their own salient features.

An illustration of various London landmarks and travel-related icons. From left to right, it includes a car, the Tower Bridge, two people walking, a double-decker bus, a red telephone booth, Big Ben, a yellow hot air balloon, a blue airplane, and several blue clouds of different shapes and sizes.

SOCIAL ACTIVITY

At FUTURO DIGITALE we not only deliver excellent English classes, we also aim at giving the students an unforgettable stay in London. Our social programme is designed to appeal to student's different interests.

They are run daily and one of our trusted team leaders and guides would always accompany them after the classes. Be prepared to be amazed by various world class museums, shopping centres, tourist places, local markets and theatres.

The social activity includes visits to places like the British Museum, the Natural History Museum and Camden town.

There is no other place better than London to do shopping. The Partner of Futuro Digitale is located on Oxford street which is one of the most important places for shopping in London. In addition to daily tours, you will also have one day trip per week to cities such as Oxford and Cambridge.



	Alloggi (prezzo per persona in camera doppia)				
	Regular (15 ore a settimana)	Semi-Intensive (20 ore a settimana)	Intensive (25 ore a settimana)	Halls of Residence	Host Stay * (colazione + cena)
1 Settimana	£110	£130	£155	£230	£220
2 Settimane	£220	£260	£310	£450	£435
3 Settimane	£319	£380	£459	£670	£645
4 Settimane	£396	£499	£575	£885	£850
5 Settimane	£495	£615	£715	£1095	£1050
6 Settimane	£594	£725	£849	£1305	£1250

Social Activity** (prezzi per gruppi)		
Per Settimana (3 ore al giorno)	2 Giorni/settimana	£180
	3 Giorni/settimana	£255

*£30/settimana extra per pensione completa.

**Le Social Activity sono disponibili per gruppi da almeno 10-15 studenti.

*** Prezzi soggetti a disponibilità.

IL COSTO DEI VOLI AEREI NON SONO INCLUSI NEI PREZZI

Per maggiori informazioni riguardo prezzi, corsi e alloggi contattaci a info@futurodigitale.org

ALLOGGI

Student Halls of Residence 1

Vivere in una Student halls of residence é il piú eccitante modo di vivere l' esperienza di Londra.

Dove?

A soli 10 minuti a piedi da Stockwell Tube Station.





Student Halls of Residence 2

La residenza é situata a 5 minuti di bus o a 10 minuti a piedi dalle stazioni di Archway e Highway che si trovano entrambe sulla linea Northern, a poca distanza dal centro e ben collegate con le maggiori zone di interesse di Londra.

Greenwich Court é stato costruito nel 1920 in una incantevole zona residenziale e comprende un ampio giardino, veranda e balcone.

Il residence é composto da un totale di 84 stanze, single e doppie con bagno privato o condiviso, distribuite su 5 piani. Tutti I piani sono forniti di una cucina provvista di tutti gli utensili necessari.

L'edi cio possiede anche un' area comune con TV a schermo piatto, una lavanderia, parcheggio auto e un ampio spazio per il deposito delle bici.

Bollette, pulizie settimanali ed internet illimitato sono inclusi nel prezzo.



Student Halls of Residence 3

Questa incantevole residenza é situata a meno di 5 minuti a piedi dalla stazione della metro di Notting Hill Gate, vicinissima alla famosa Portobello Road e a poca distanza dal centro.

L'edi cio può ospitare no a 140 studenti in spaziose camere singole decorate in stile tradizionale e con bagno in camera. Libero accesso internet.



Student Halls of Residence 4

A 15 minuti a piedi dalla stazione della metro di King' s Cross, collegata con 5 di erenti linee: Piccadilly, Victoria, Northern, Metropolitan, Circle e Hammersmith & City. Le stazioni di Camden e Mornington Crescent sono altrettanto facilmente raggiungibili a piedi.

La residenza é aperta dal 2006 ed é composta da appartamenti per 5-6 persone e 7 camere singole, tutte con bagno privato e cucina attrezzata di tavolo da pranzo e divano. Le stanze sono arredate con letto, cassettera, armadio, specchio, sedia e scrivania. I corridoi e le cucine vengono puliti con frequenza settimanale. Gli studenti sono responsabili di pulire la propria stanza ed il proprio bagno. Non saranno fornite le tovaglie. Le lenzuola, fornite dal residence dovranno essere cambiate dagli studenti.

All' interno dell' edi cio troverete anche un' area comune con TV, terrazza, giardino, uno spazio comune per le bici ed una lavanderia. Accesso per le sedie a rotelle. Internet incluso nel prezzo.



Host Stay

Il miglior modo per vivere a pieno l'esperienza della vita britannica e per capire affondo questa cultura.

Offrendoti l'unica opportunità di vivere con una famiglia inglese, ti diamo la possibilità di imparare, divertirti e vivere una vera esperienza UK.

Perché?

- Familiare, ti sentirai a casa in un clima totalmente britannico.
- Possibilità di avere pasti preparati in casa.
- Opportunità di vivere il vero British lifestyle.
- Prezzi ragionevoli.
- Scelta della famiglia nell'area di Londra.

Dove?

Tutte le nostre famiglie sono situate in zona 3.

Accredited by the





E' ANTENNA



Albo informatico
delle agenzie per il lavoro



E' ASSOCIATO

